



Integrated Government Philippines Project

*Filipino nation moving toward globally competitive ICT-empowered government*



Information and Communications  
Technology Office



Advanced Science  
and Technology Institute

# Government Common Platform (GCP)



# The Shared Vision

The shared vision is to reduce the pain and confusion endured by citizens when transacting with government in the process of securing essential services to meet their particular need;

# The Current Pain

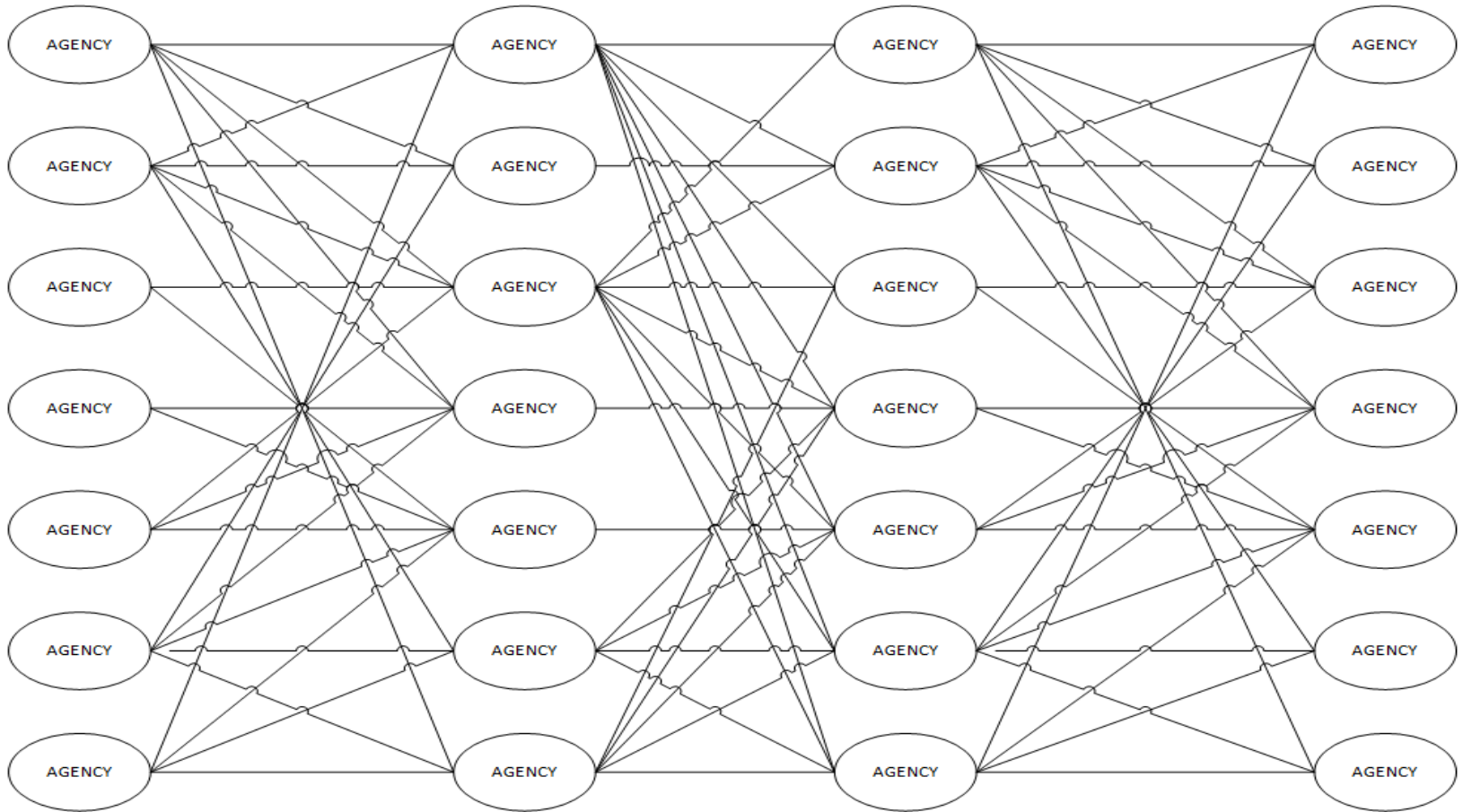
Government institutions have islands of data that are not so easily shared between other government entities – data contained in physical forms or documents or stored in disconnected legacy database systems;

Data sharing between government institutions is inhibited due to reasons that range from human preferences, bureaucracy, technology incompatibility, to current laws and institutional policy;

# The Current Pain

Sharing is also inhibited by the reality that government consists of institutions that do not necessarily share similar priorities when it comes to what type of data is considered “important”. Importance is naturally determined by context; This uniqueness while essential to the delivery of services, presents a challenge when it comes to data sharing, process inter-operability, and efficient service delivery; Despite all these, the mandate is for government institutions to share data between each other in order to better serve and safeguard the interests of

# Current Data Sharing in Government



# The Challenge

*“How will government share credible data and relevant information efficiently with each other on-demand?”*

# Persisting Realities

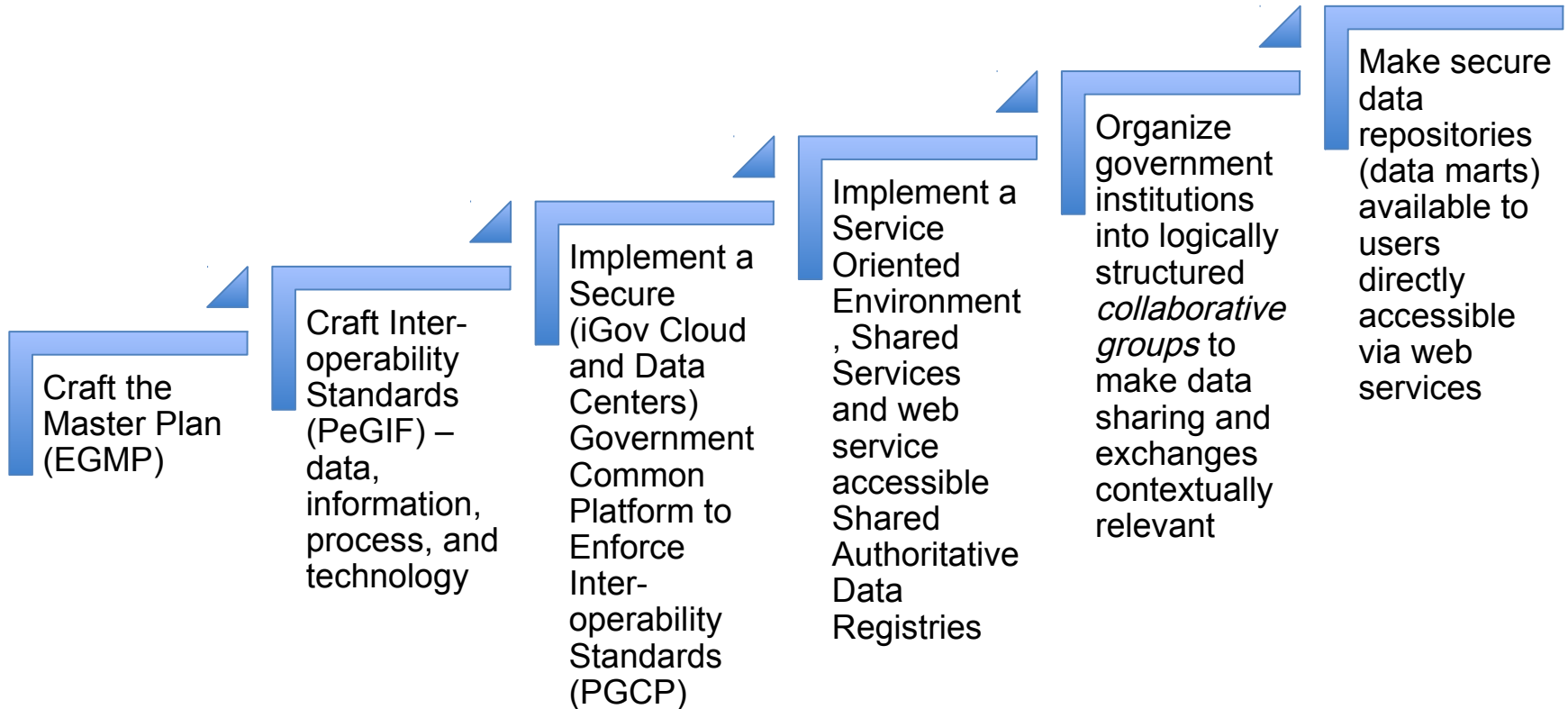
Each of the more than 350 national government agencies and government owned and controlled corporations have unique functions and will maintain processes, data, and information designed to suit their respective contexts; Government institutions, at one point in time, would necessarily need to cooperate with several other agencies depending on need or directive (*national disasters, economic programs, etc.*) and such a cooperation would require exchanges of data that is “mutually” relevant or usable;

# The Technology Solution

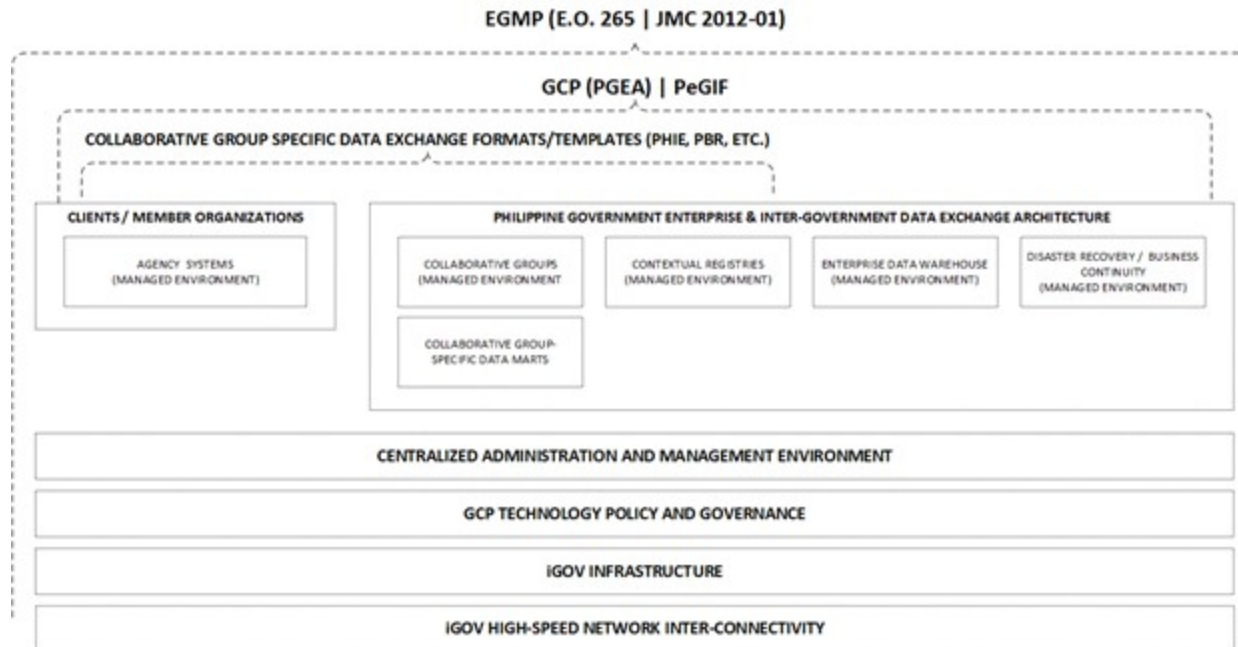
## **The Government Common Platform or GCP**



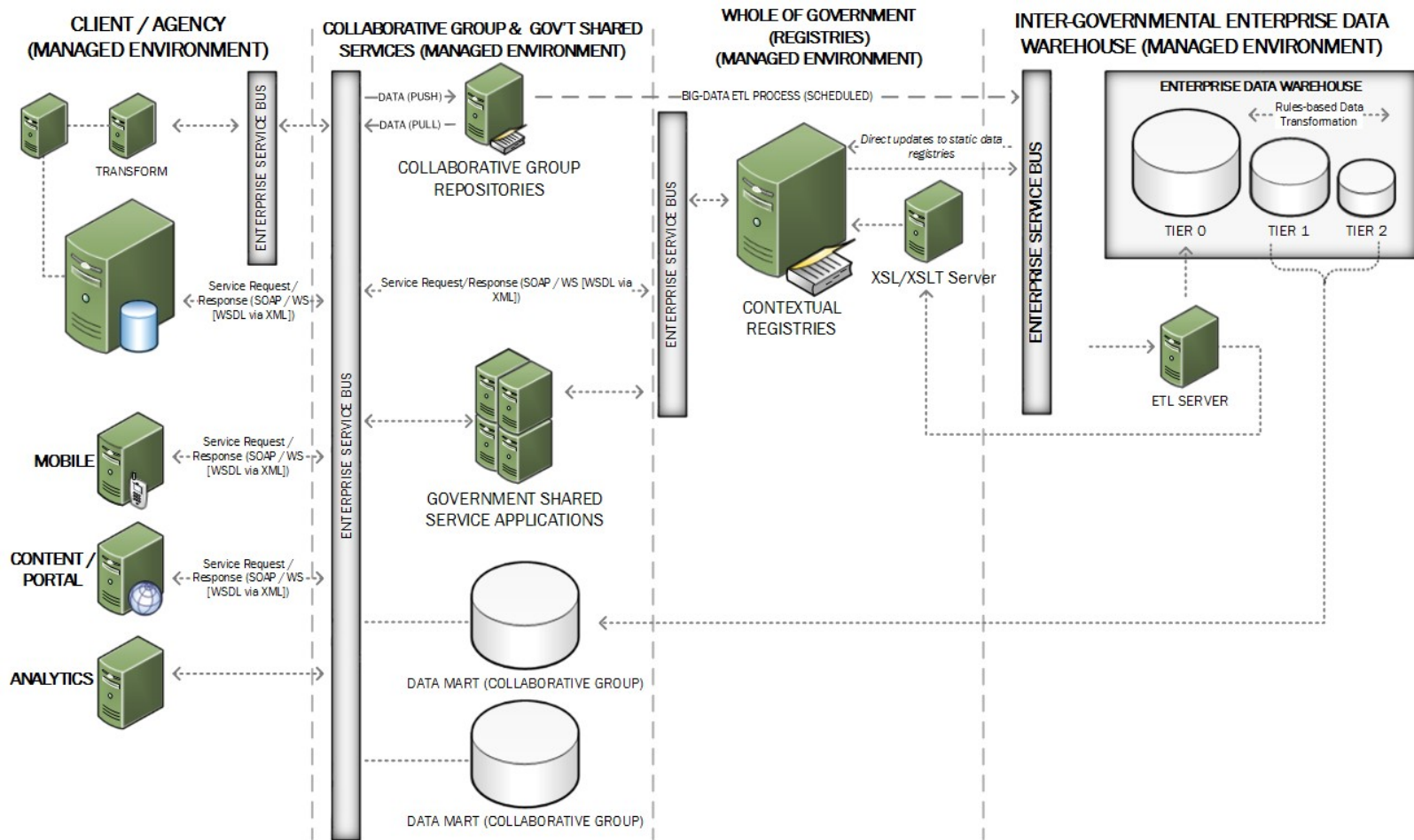
# Steps Toward Inter-Operability



# The Context of Standards



# The GCP Technical Environment



# Architecture Philosophy

The architecture philosophy to design a secure common platform *and an inter-governmental data sharing environment* is straightforward:

- ✓ *De-couple* systems;
- ✓ *Consolidate* data;
- ✓ *Federate* the distribution of data by *context*, and,
- ✓ *Secure Access* to federated data repositories;

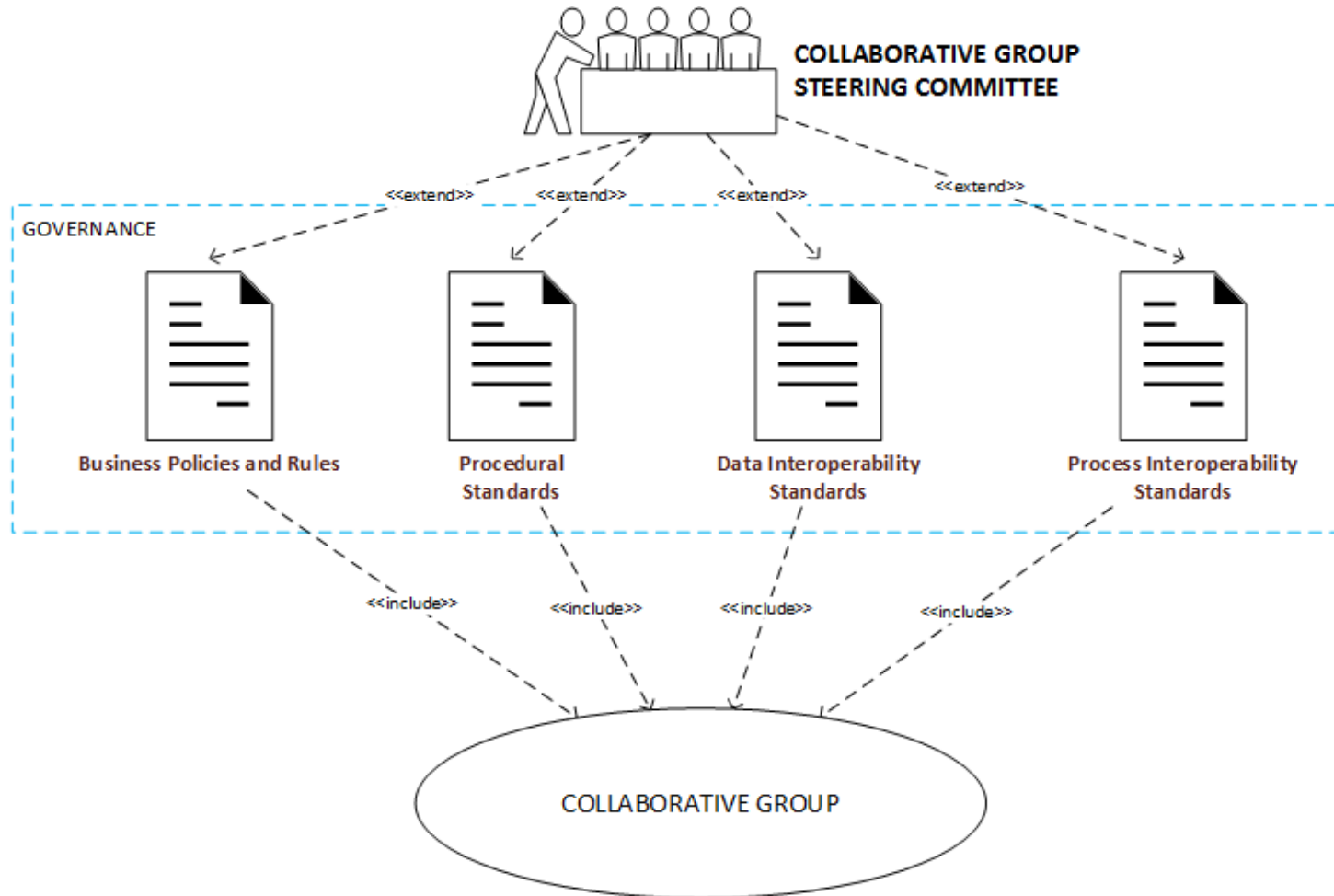
The *foci* of the enterprise architecture will be on what will “UNIFY” and not on what will “DIFFERENTIATE”. The focus is on *universality* and not *atomicity*.

# Technical Design Considerations

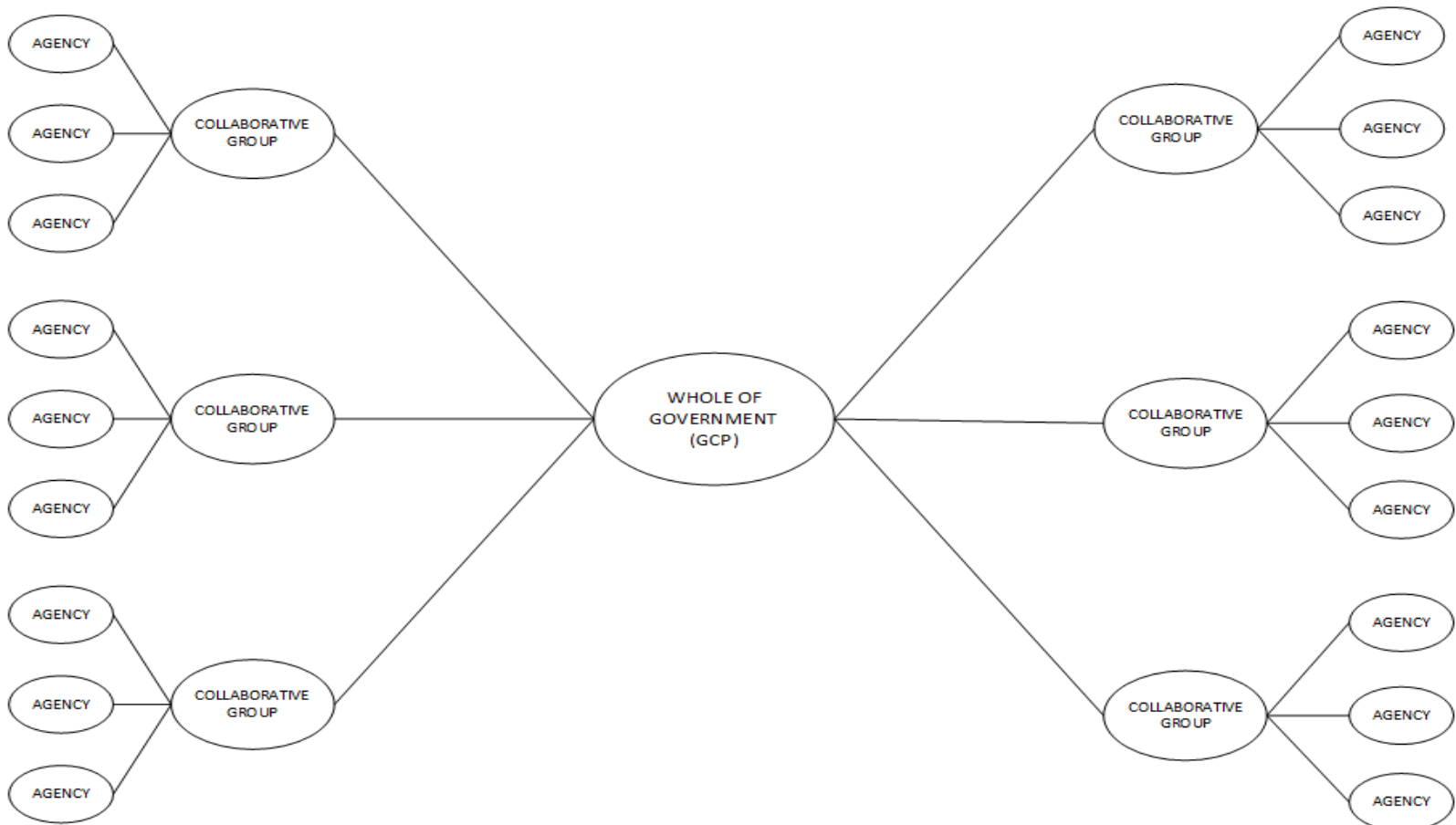
The Technical Architecture and Inter-Governmental Data Sharing Model:

1. MUST employ a non-intrusive, de-coupled, asymmetric, asynchronous, service-oriented architecture (SoA) design, focused on providing for “facilities” and “channels” rather than on standardizing processes or applications unique to each participating member – the “*whole being greater than the sum of its parts*”;
2. MUST consist of component parts that are independently scalable and extensible vertically,

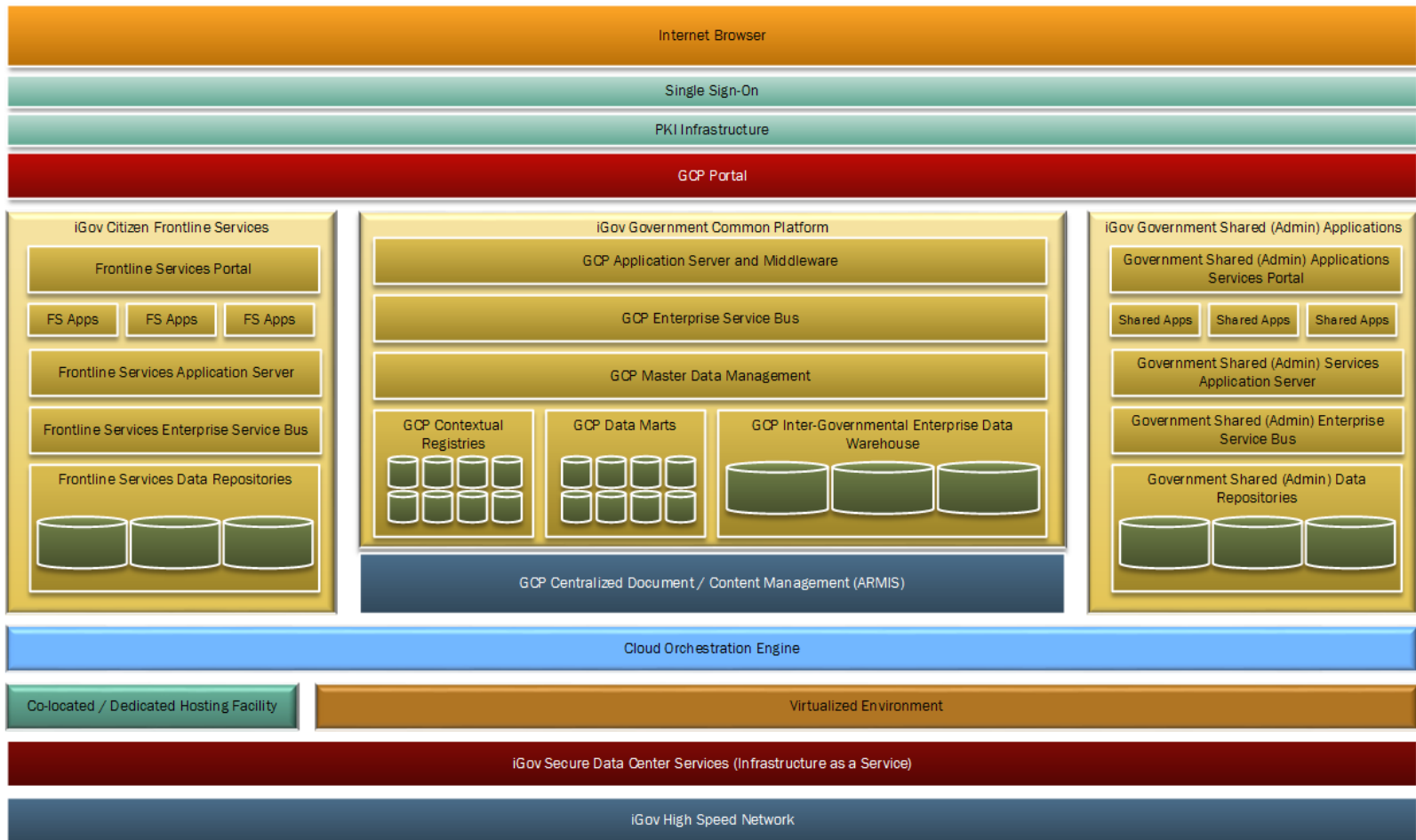
# The Structure of Collaborative Groups



# The Future of Data Sharing in Government (through Collaborative Groups)



# The Future GCP Environment







**Thank You!**

**[gcpssupport@i.gov.ph](mailto:gcpssupport@i.gov.ph)**  
**[www.i.gov.ph/pgcp](http://www.i.gov.ph/pgcp)**

